

## Guidance on **heat wave / above-normal temperature**

**Area concerned: Italy, southern Central Europe, Balkans, southern Caucasus**

Initial statement issued on 03 August 2017

First update issued on 15 August 2017

Second update issued on 25 August 2017

**Valid: Begin: on 29 August 2017**

**End: 4 September 2017**

**To: Climate Watch focal points of NMHSs: Spain, Italy, Austria, Czech Republic, Poland, Slovakia, Hungary, Slovenia, Croatia, Bosnia and Herzegovina, Serbia, Montenegro, Albania, Former Yugoslav Republic of Macedonia, Greece, Bulgaria, Romania, Moldova, Ukraine, Russia, Georgia, Armenia, Azerbaijan, Turkey, Cyprus, Lebanon, Syria, Israel, Jordan**

The RA VI RCC Network Offenbach Node on Climate Monitoring (RCC Node-CM) is responsible for providing Climate Watch guidance information for NMHSs' own consideration for issuing climate advisories for their territory.

After having consulted the consortium partners of the RCC Node-CM and RCC Node-LRF (RA VI RCC Network Toulouse and Moscow Node on Long-Range Forecasting), RCC-CM issues the following guidance information:

Due to the results from monthly forecasts we expect a continuation of:

**"The period with significantly above-normal temperatures and heat waves, at least for the next week, is expected for southern and south-eastern RA VI (from southern France - Italy – south-eastern Central Europe, Balkans). The weekly anomalies are forecasted with +3°C to +6°C; daily temperature maxima up to 40°C are expected due to advection of warm air from Africa and/or high pressure influence. The probability for this anomaly is estimated to be above 90%. This warm period could come along with drought, local thunderstorms, partly with hail, or forest fires. Severe impacts such as water shortage and heat stress particularly for vulnerable persons are to be expected. Temperatures in Greece and Turkey are expected to be mostly around normal the next week."**

This information should be used as guidance for the National Meteorological and Hydrological Services (NMHS) in a pre-operational mode. It is up to the above mentioned NMHSs to closely monitor the status and evolution of the current climate conditions and to consider issuing a national Climate Watch Advisory. RCC Node-CM would appreciate feedback from NMHS whether this information was helpful. Also, any suggestion on further pieces of information needed by NMHSs is highly welcomed!

Attached we provide you with a template for a national climate watch advisory as agreed among the climate watch pilots and RCC Node-CM.

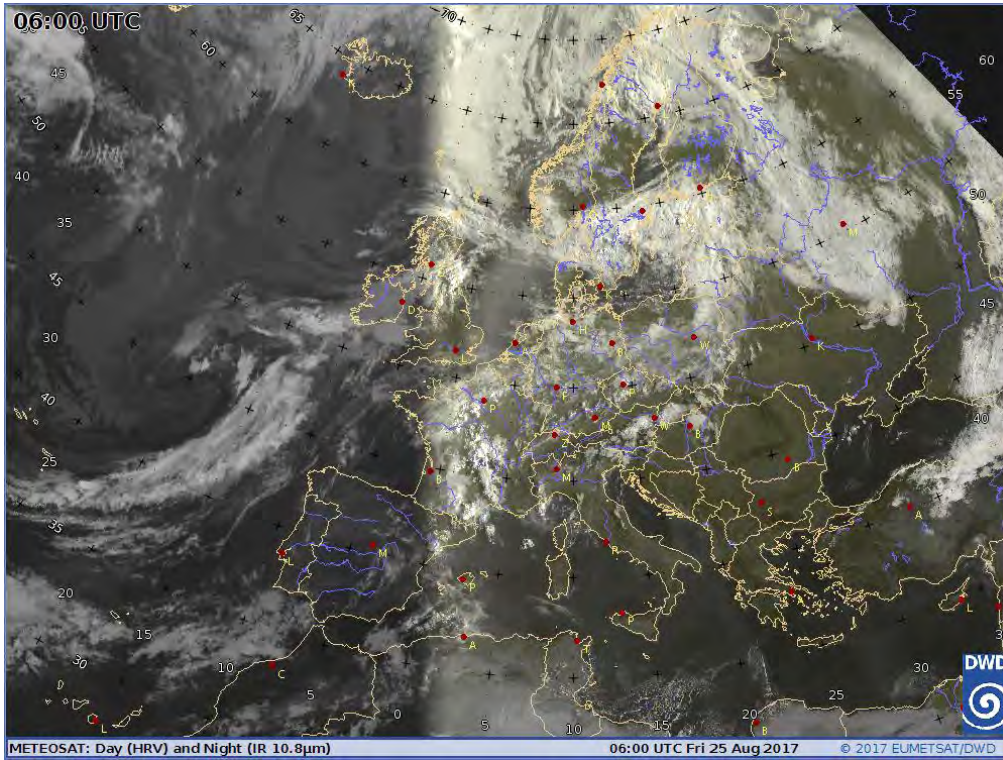
Please note that further information can be obtained from RCC Node-CM website (<http://www.dwd.de/rcc-cm>) concerning Climate Monitoring and from RCC Node-LRF websites (<http://seasonal.meteo.fr/en>, <http://neacc.meteoinfo.ru/forecast>) concerning Long-Range Forecast or by e-mail to [rcc.cm@dwd.de](mailto:rcc.cm@dwd.de) or [rcc-lrf-mf@meteo.fr](mailto:rcc-lrf-mf@meteo.fr).

For ECMWF members further information on monthly forecasts after logging in is provided at <http://www.ecmwf.int/> ->Forecasts

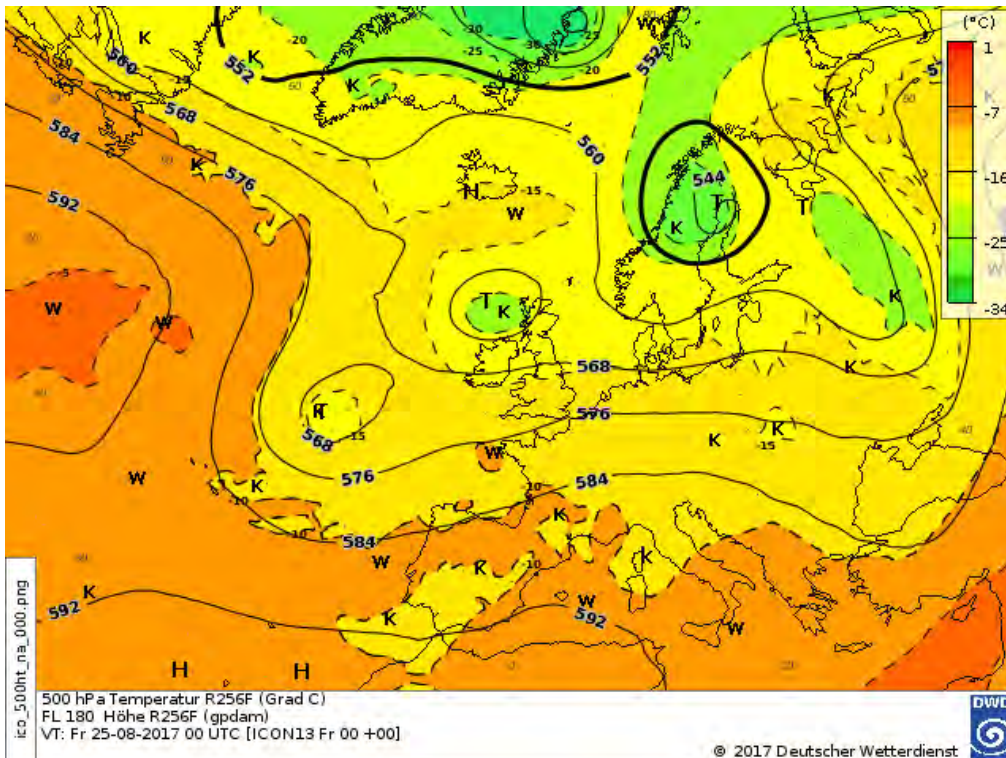
We will monitor the evolution of the anomaly, issue updates if significant change arise and close the advice when no clear signal can be detected in the forecasts.

On behalf of the RCC Node-CM Team

# Climate Watch Advisory



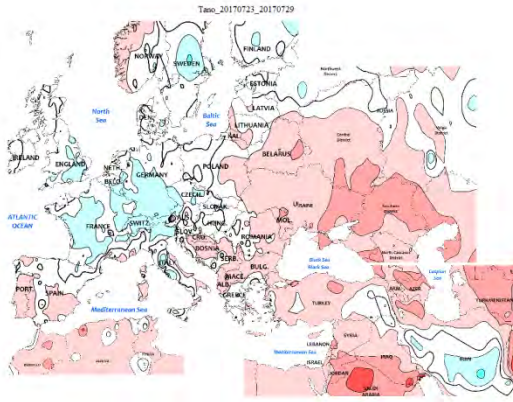
Meteosat 10 satellite image 25 August 2017, 06 UTC. Source: DWD



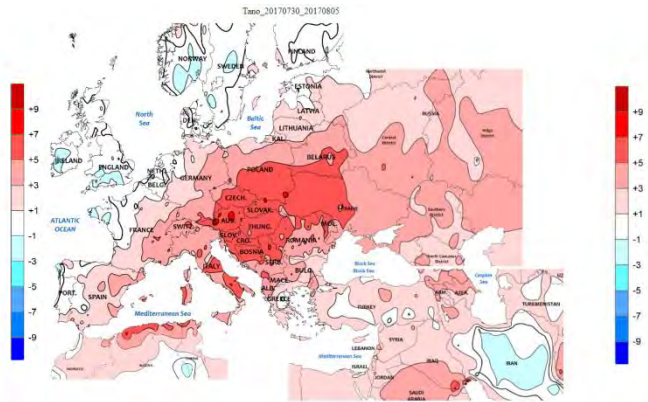
500 hPa chart, 25 August 2017, 00 UTC. Source: DWD

# Climate Watch Advisory

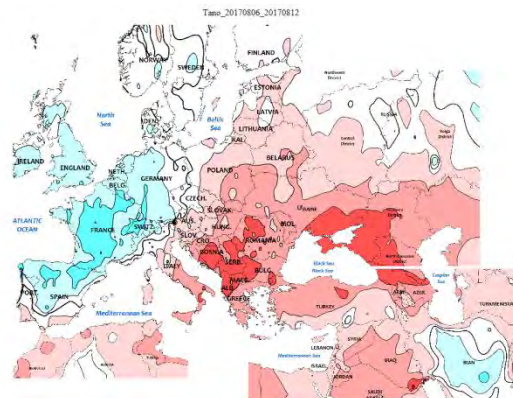
23 - 29 July 2017



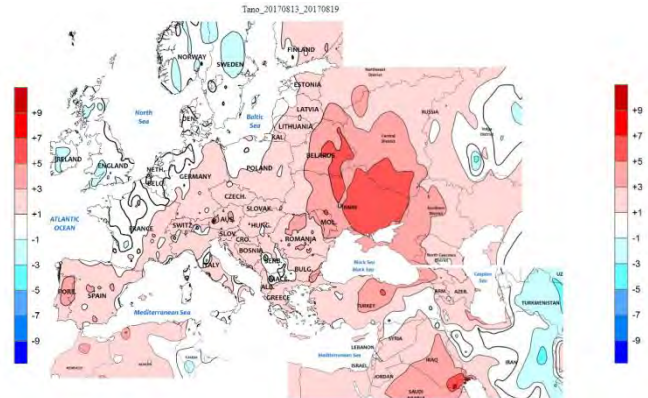
30 July - 05 August 2017



06-12 August 2017

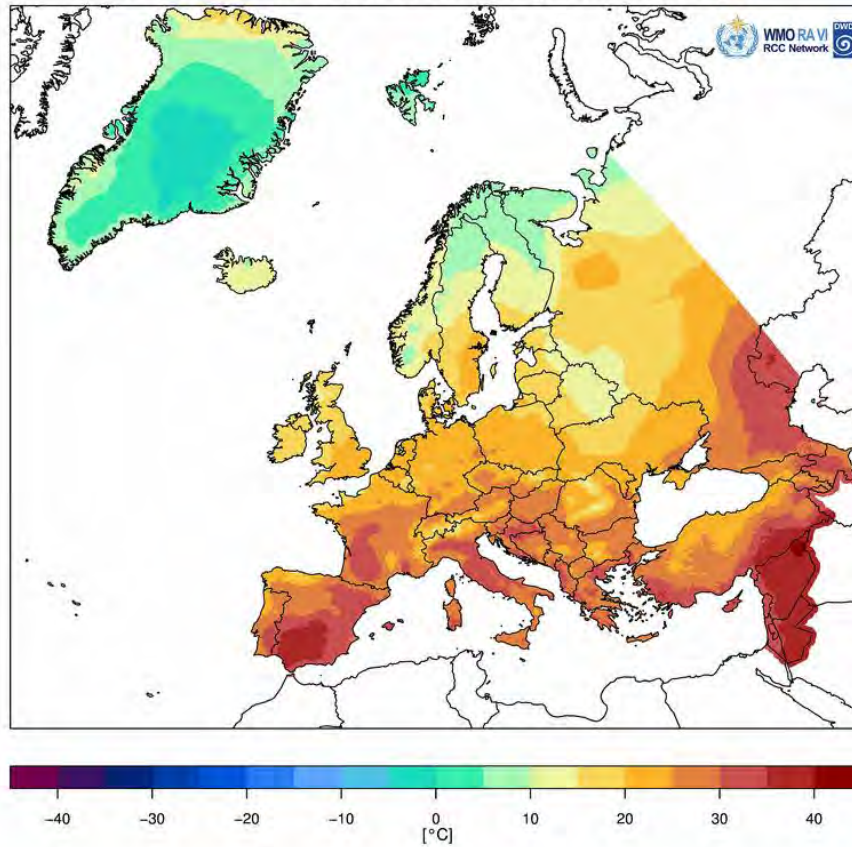


13-19 August 2017



Weekly temperature anomalies in °C for the last weeks (Source: Climate Prediction Center, USA)

Tägliche Maximumtemperatur: 24. August 2017 (Europa)  
Daily Maximum Temperature: 24 August 2017 (Europe)



Daily maximum temperature for Europe from 24<sup>th</sup> August 2017 (Source: <http://www.dwd.de/rcc-cm>)